

Renate Hampke

Portfolio
2016

SEMJON CONTEMPORARY
GALERIE FÜR ZEITGENÖSSISCHE KUNST



Schröderstr. 1, 10115 Berlin, Tel.+49-30-784 12 91, Fax.+49-30-28 09 41 99,
office@semjoncontemporary.com, www.semjoncontemporary.com



Renate Hampke
Pneuma-tacs (installation view) at Semjon Contemporary, 2016
Photo: Semjon H. N. Semjon



Renate Hampke

Seifenscheibe / Soap Disk (work in progress)

1999, 88 x 73 x 17,5 cm, foam film,
soap (found - and collected pieces),
inscribed paper, cord, artificial resin, tape
Photo: Semjon H. N. Semjon

SEMJON CONTEMPORARY
GALERIE FÜR ZEITGENÖSSISCHE KUNST

SC



Renate Hampke
Seifenscheibe / Soap Disk (work in progress)
Detail
Photo: Semjon H. N. Semjon



Renate Hampke

Pneuma-tacs (installation view) at Semjon Contemporary, 2016

2015/2016, variable sizes (pedestal each: 114 x 29,4 x 29,4 cm)

tires and mixed media

Photo: Semjon H. N. Semjon

SEMJON CONTEMPORARY
GALERIE FÜR ZEITGENÖSSISCHE KUNST





Renate Hampke

Pneuma-tacs (installation view) at Semjon Contemporary, 2016

2015/2016, variable sizes (pedestal each: 114 x 29,4 x 29,4 cm)

tires and mixed media

Photo: Semjon H. N. Semjon

SEMJON CONTEMPORARY
GALERIE FÜR ZEITGENÖSSISCHE KUNST





Renate Hampke
Pneuma-tacs (installation view) at Semjon Contemporary, 2016
Detail
Photo: Semjon H. N. Semjon



Renate Hampke
Pneuma-tacs (installation view) at Semjon Contemporary, 2016
Detail
Photo: Semjon H. N. Semjon



Renate Hampke
Pneuma-tacs (installation view) at Semjon Contemporary, 2016
Detail
Photo: Semjon H. N. Semjon



Renate Hampke

Standbein

2015, 140 x 70 x 50 cm

Valet stand, bicycle tires, round glass, wine bottle, „Wächter (controler)“

Photo: Jürgen Baumann

SEMJON CONTEMPORARY
GALERIE FÜR ZEITGENÖSSISCHE KUNST

SC



Renate Hampke
Sukzessive Hälften
2015, 12 x 90 x 110 cm
Roof lights, one glass plate, bicycle tires, metal (parts of an engine)
Photo: Jürgen Baumann



Renate Hampke
Gefingert
2015, 29,7 x 42 x 2 cm
Charcoal on wood
Photo: Lukas Heibges



Renate Hampke

Transformer

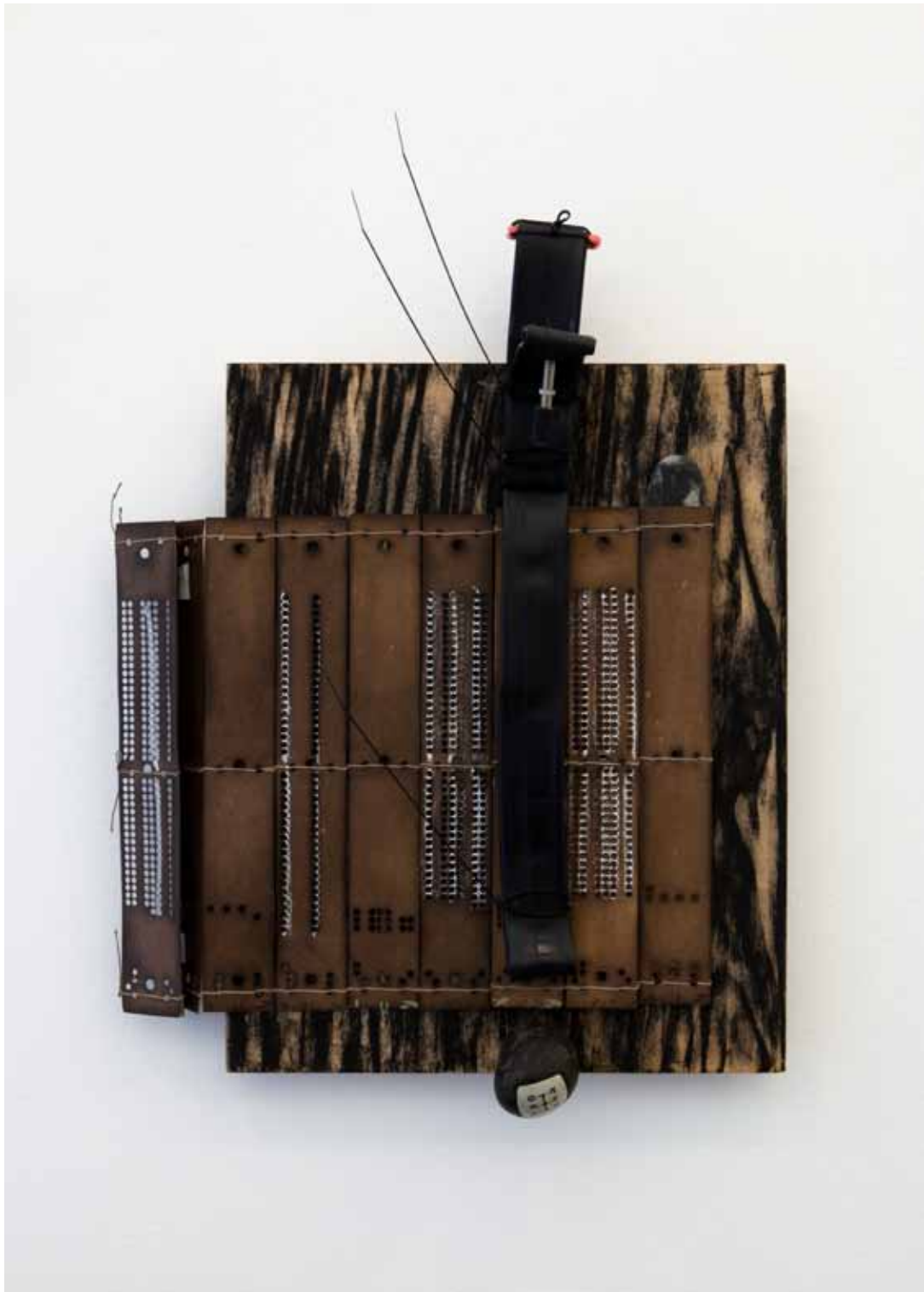
2015, 65 x 65 x 95 cm

Bicycle and plastic tires, newspaper rack, metal construction, liquorice

Photo: Lukas Heibges

SEMJON CONTEMPORARY
GALERIE FÜR ZEITGENÖSSISCHE KUNST





Renate Hampke

Ode aus Japan

2015, 62 x 43 cm, drafting board (drawn with charcoal), bicycle tire, zip tie,
barrette, liquorice, steering-stick head, japanese found piece, soap

Photo: Lukas Heibges

SEMJON CONTEMPORARY
GALERIE FÜR ZEITGENÖSSISCHE KUNST

SC



Renate Hampke

Doppelt hält besser / Make assurance double sure

2014, 77 x 52 x 28 cm

Film reel, bicycle tires, wood and pigmented emulsion paint

Photo: Lukas Heibges

SEMJON CONTEMPORARY
GALERIE FÜR ZEITGENÖSSISCHE KUNST





Renate Hampke

Doppelt hält besser / Make assurance double sure

2014, 77 x 52 x 28 cm

Film reel, bicycle tires, wood and pigmented emulsion paint

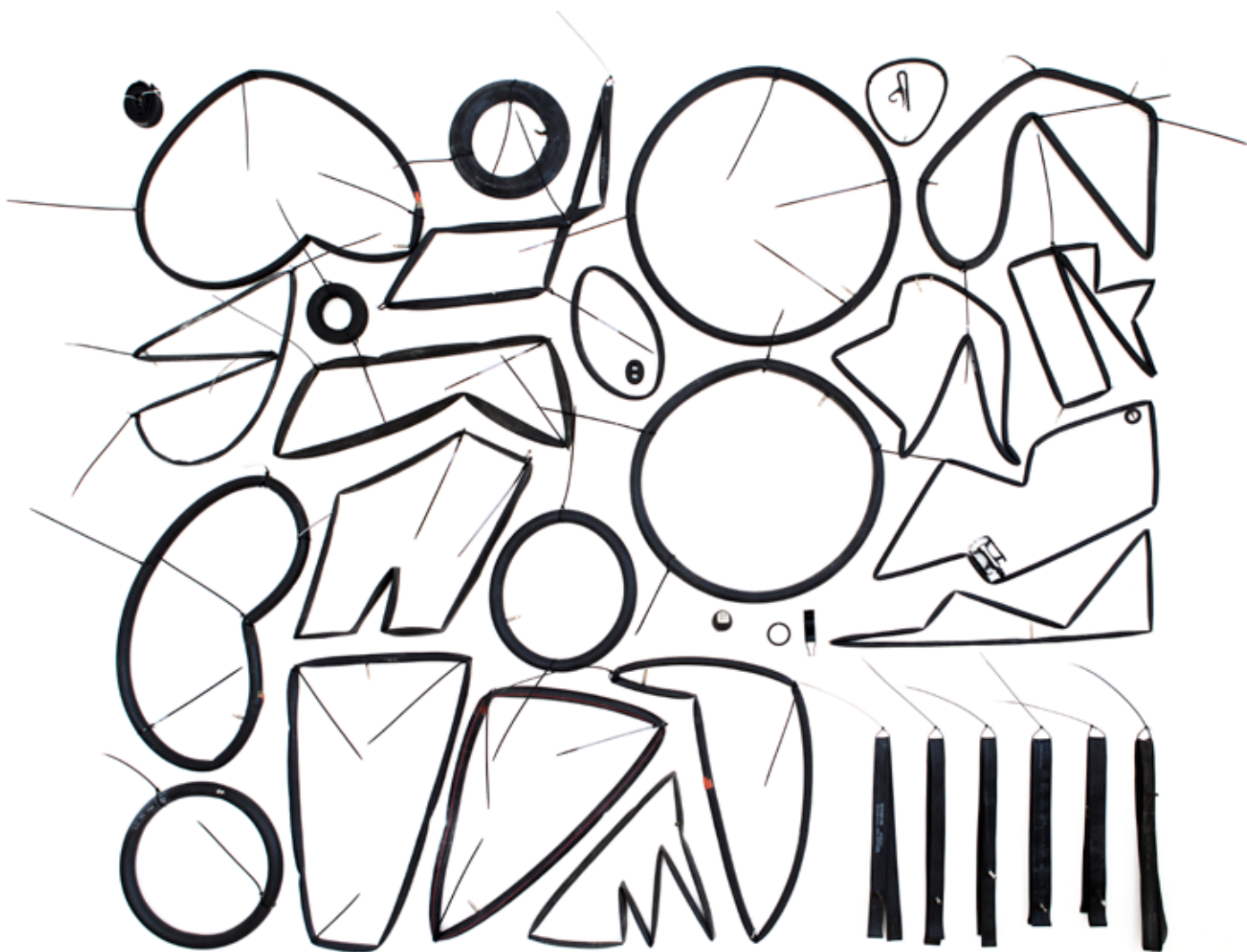
Photo: Lukas Heibges

SEMJON CONTEMPORARY
GALERIE FÜR ZEITGENÖSSISCHE KUNST

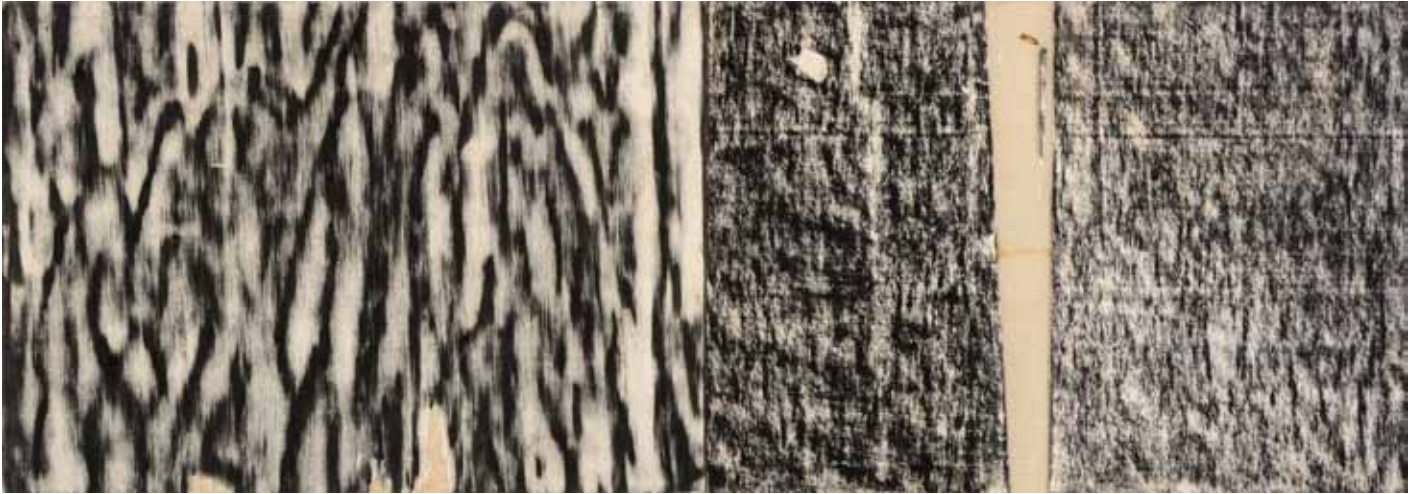




Renate Hampke
Seifenscheibe-A
2014, 78 x 78 x 17,5 cm
Foam foil, soap, paper, rubber
Photo: Lukas Heibges



Renate Hampke
O.T. (wall installation)
2014, 300 x 250 cm
Bicycle tires, small rubber parts, nails
Photo: Jürgen Baumann



Renate Hampke
O. T. (frottage)
2014, 29,7 x 84 cm
Plywood, charcoal
Photo: Jürgen Baumann



Renate Hampke

O.T. (room installation in SW Endmoräne, in Veritas, Wittenberge)

2014, 450 x 250 x 250 cm

Cable drum, broken curd soaps, (projection)

Photo: Renate Hampke

SEMJON CONTEMPORARY
GALERIE FÜR ZEITGENÖSSISCHE KUNST





Renate Hampke

O.T. (room installation in SW Endmoräne, in Veritas, Wittenberge)

2014, 450 x 250 x 250 cm

Cable drum, broken curd soaps, (projection)

Photo: Renate Hampke

SEMJON CONTEMPORARY
GALERIE FÜR ZEITGENÖSSISCHE KUNST





Renate Hampke
O. T / Without Title (Holzzeichnung / Wood drawing)
2013, 36 x 52 x 2 cm
Charcoal on wood
Photo: Lukas Heibges



Renate Hampke
Holzzeichnung / Wood drawing
2013 29,5 x 21 cm (41 6 x 33 cm, framed)
Wood, graphite
Photo: Jürgen Baumann



Renate Hampke
Pneumatics
Exhibition view at Semjon Contemporary 2013
Photo: Jürgen Baumann



Renate Hampke
Renate Hampke, O. T. Nr. 1/3 (+1)
2013, 110 x 90 cm, 112,6 x 92,8 cm (framed)
Fine Art Print (Pigmentdruck) on 188 g
Hahnemühle Photo Rag



Renate Hampke

Pneumatics

Exhibition view at Semjon Contemporary 2013

Photo: Jürgen Baumann

SEMJON CONTEMPORARY
GALERIE FÜR ZEITGENÖSSISCHE KUNST





Renate Hampke

Pneumatics

Exhibition view at Semjon Contemporary 2013

Photo: Jürgen Baumann

SEMJON CONTEMPORARY
GALERIE FÜR ZEITGENÖSSISCHE KUNST





Renate Hampke
Pneumatics
Exhibition view at Semjon Contemporary 2013
Photo: Jürgen Baumann



Renate Hampke

Pneumatics

Exhibition view at Semjon Contemporary 2013

Photo: Jürgen Baumann

SEMJON CONTEMPORARY
GALERIE FÜR ZEITGENÖSSISCHE KUNST





Renate Hampke

Pneuma - mit und ohne

2013, 43 x 39 x 106 cm

Bicycle tires, steel tube folding chair, zip ties, balloon, liquorice

Photo: Jürgen Baumann

SEMJON CONTEMPORARY
GALERIE FÜR ZEITGENÖSSISCHE KUNST

SC



Renate Hampke

Pneuma - mit und ohne

2013, 43 x 39 x 106 cm

Bicycle tires, steel tube folding chair, zip ties, balloon, liquorice

Photo: Jürgen Baumann

SEMJON CONTEMPORARY
GALERIE FÜR ZEITGENÖSSISCHE KUNST





Renate Hampke

Pneuma - mit und ohne

2013, 43 x 39 x 106 cm

Bicycle tires, steel tube folding chair, zip ties, balloon, liquorice

Photo: Jürgen Baumann

SEMJON CONTEMPORARY
GALERIE FÜR ZEITGENÖSSISCHE KUNST

SC



Renate Hampke
Stützknöten
2013, 104 x 74 x 74 cm
Bicycle tires, zip ties, plywood
Photo. Jürgen Baumann



Renate Hampke
Stützknoten (detail view)
2013, 104 x 74 x 74 cm
Bicycle tires, zip ties, plywood
Photo. Jürgen Baumann



Renate Hampke

Auf Titelsuche

2013, 76 x 62 x 52 cm

Bicycle tires, wooden taboret, childrens' seat, zip ties, liquorice

Photo: Jürgen Baumann

SEMJON CONTEMPORARY
GALERIE FÜR ZEITGENÖSSISCHE KUNST

SC



Renate Hampke
Pneumatics
Exhibition view at Semjon Contemporary 2013
Photo: Jürgen Baumann



Renate Hampke

Abwärts / Downwards (artists' edition of 3 (+1))

2013, 29,9 x 20 cm, 32,7 x 22,9 x 3,1 cm (framed)

Fine Art Print (pigment print) on Hahnemühle Photo Rag 188 g

Photo: Renate Hampke/Jürgen Baumann

SEMJON CONTEMPORARY
GALERIE FÜR ZEITGENÖSSISCHE KUNST





Renate Hampke

Aufwärts / Upwards (artists' edition of 3 (+1))

2013, 29,9 x 20 cm, 32,7 x 22,9 x 3,1 cm (framed)

Fine Art Print (pigment print) on Hahnemühle Photo Rag 188 g

Photo: Renate Hampke/Jürgen Baumann

SEMJON CONTEMPORARY
GALERIE FÜR ZEITGENÖSSISCHE KUNST





Renate Hampke

Bios I (artists' edition of 3 (+1))

2013, 29,9 x 20 cm, 32,7 x 22,9 x 3,1 cm (framed)

Fine Art Print (pigment print) on Hahnemühle Photo Rag 188 g

Photo: Renate Hampke/Jürgen Baumann

SEMJON CONTEMPORARY
GALERIE FÜR ZEITGENÖSSISCHE KUNST





Renate Hampke

Bios II (artists' edition of 3 (+1))

2013, 29,9 x 20 cm, 32,7 x 22,9 x 3,1 cm (framed)

Fine Art Print (pigment print) on Hahnemühle Photo Rag 188 g

Photo: Renate Hampke/Jürgen Baumann

SEMJON CONTEMPORARY
GALERIE FÜR ZEITGENÖSSISCHE KUNST

SC



Renate Hampke

Netzwerk (gallery edition of 33 (+4))

2013, 29,9 x 20 cm, 32,7 x 22,9 x 3,1 cm (framed)

Fine Art Print (pigment print) on Hahnemühle Photo Rag 188 g

Photo: Renate Hampke/Jürgen Baumann

SEMJON CONTEMPORARY
GALERIE FÜR ZEITGENÖSSISCHE KUNST

SC



Renate Hampke
Seifenspinne
2005, 25 x 14 x 14 cm
Soap leftovers, rotary clothes dryer, glass plate, screws
Photo: Jürgen Baumann



Renate Hampke
Seifenspinne, Pink
2005, 25 x 16 x 10 cm
Soap leftovers, egg slicer, inscribed paper, granite
Photo: Jürgen Baumann



Renate Hampke
Seifenobjekt
2005, 25 x 12,5 x 12,5 cm
Soap leftovers, net, foil box
Photo: Jürgen Baumann



Renate Hampke
Falscher Hase
2012, 22 x 45 x 55 cm
Found pieces, soap forms, zip ties
Photo: Jürgen Baumann



Renate Hampke

Trilogische Installation (three parts)

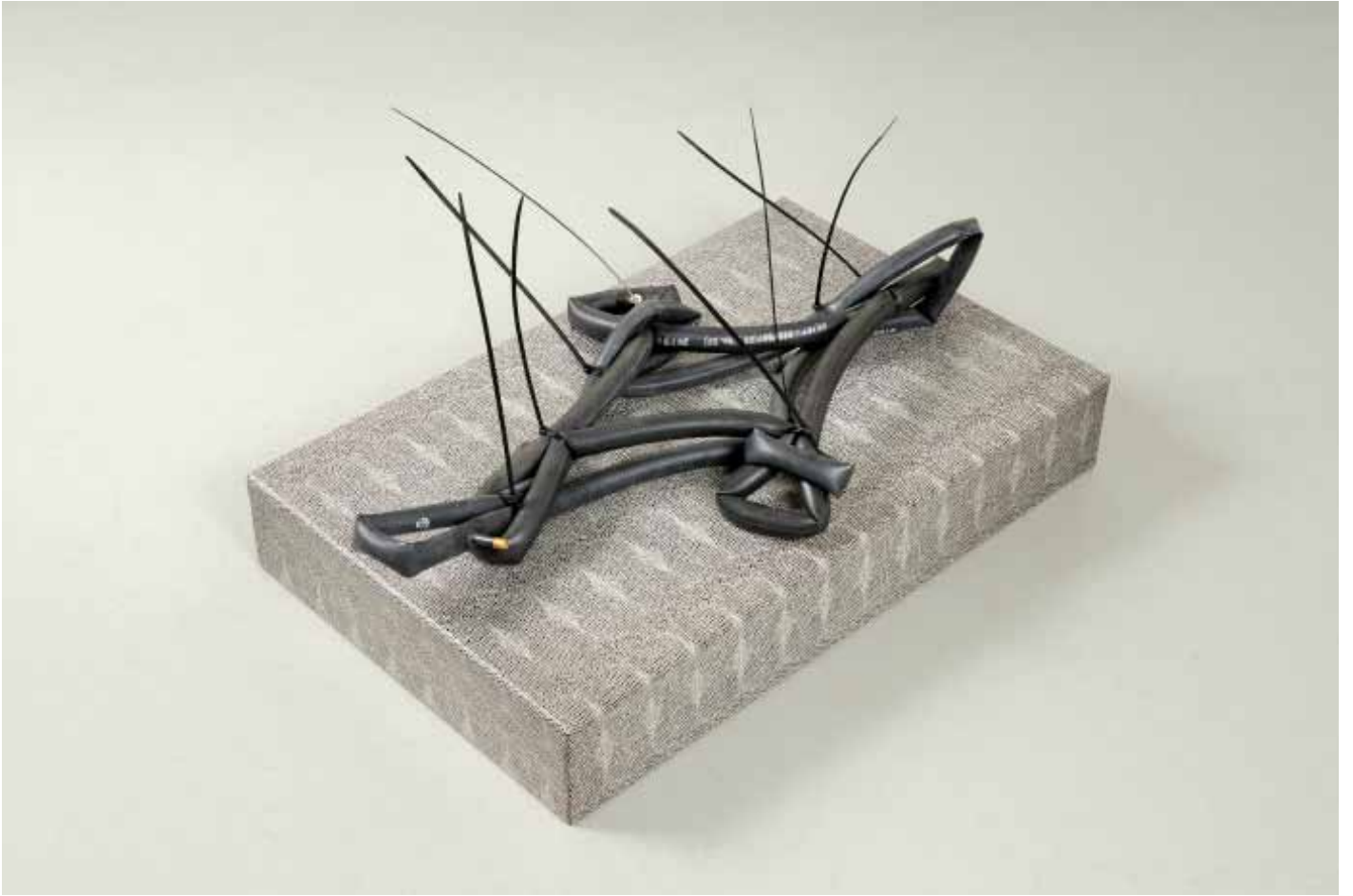
2013, 103 x 33 x 14 cm

Metal grid, bicycle tires, zip ties, plastic, angle grider discs

Photo: Jürgen Baumann

SEMJON CONTEMPORARY
GALERIE FÜR ZEITGENÖSSISCHE KUNST





Renate Hampke

Luftnummer

2013, 40 x 50 x 70 cm

Bicycle tires, zip ties, snake's skin paper, wood

Photo: Jürgen Baumann

SEMJON CONTEMPORARY
GALERIE FÜR ZEITGENÖSSISCHE KUNST





Renate Hampke

Luftnummer (detail view)

2013, 40 x 50 x 70 cm

Bicycle tires, zip ties, snake's skin paper, wood

Photo: Jürgen Baumann

SEMJON CONTEMPORARY
GALERIE FÜR ZEITGENÖSSISCHE KUNST

SC



Renate Hampke
Laura Croft
2013, 100 x 40 x 23 cm
Bicycle tires, zip ties, balloons
Photo: Jürgen Baumann



Renate Hampke

Afrikana

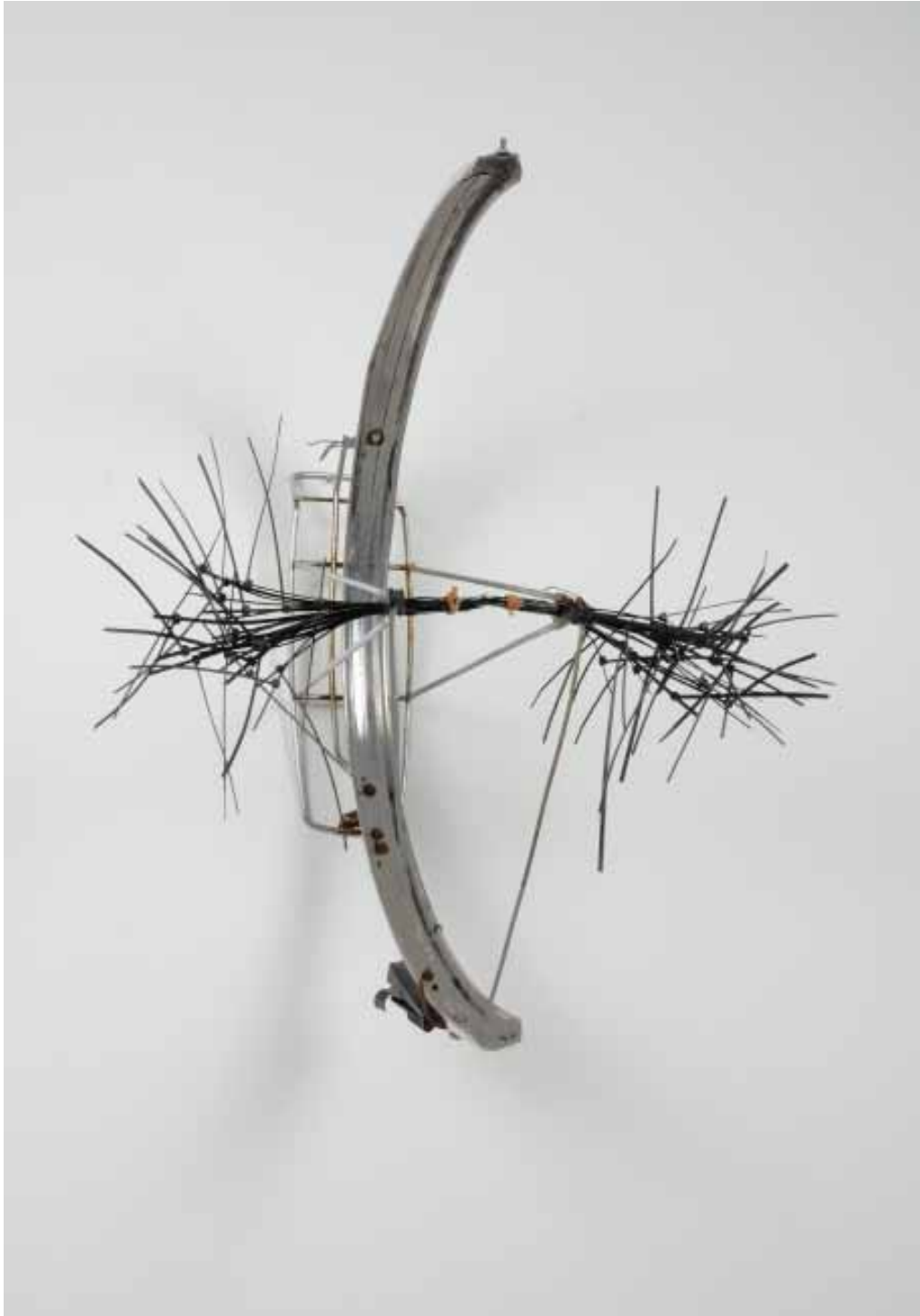
2012, 53 x 72 x 85 cm

Bicycle rack, splashguard, zip ties (leftovers)

Photo: Jürgen Baumann

SEMJON CONTEMPORARY
GALERIE FÜR ZEITGENÖSSISCHE KUNST





Renate Hampke

Afrikana

2012, 53 x 72 x 85 cm

Bicycle rack, splashguard, zip ties (leftovers)

Photo: Jürgen Baumann

SEMJON CONTEMPORARY
GALERIE FÜR ZEITGENÖSSISCHE KUNST

SC



Renate Hampke
Refrain
2011, 55 x 85 x 65 cm
Bicycle tires, zip ties, liquorice
Photo: Jürgen Baumann



Renate Hampke
Refrain (detail view)
2011, 55 x 85 x 65 cm,
Bicycle tires, zip ties, liquorice
Photo: Jürgen Baumann



Renate Hampke
Knoten III and IV
2011, 60 - 70 cm length
Bicycle tires, caoutchouc, curd soap, toilet soaps, zip ties
Photo: Jürgen Baumann



Renate Hampke

Schlauchobjekt

2011, 110 x 60 x 60 cm

Bicycle tires, zip ties, wooden rack, balloon

Photo: Jürgen Baumann

SEMJON CONTEMPORARY
GALERIE FÜR ZEITGENÖSSISCHE KUNST

SC



Renate Hampke

Schlauchobjekt

2011, 110 x 60 x 60 cm

Bicycle tires, zip ties, wooden rack, balloon

Photo: Jürgen Baumann

SEMJON CONTEMPORARY
GALERIE FÜR ZEITGENÖSSISCHE KUNST

SC



Renate Hampke

Schaumschläger

2005, 25 x 12 x 12 cm

Soap leftovers, swashbuckler, stone plate

Photo: Jürgen Baumann

SEMJON CONTEMPORARY
GALERIE FÜR ZEITGENÖSSISCHE KUNST

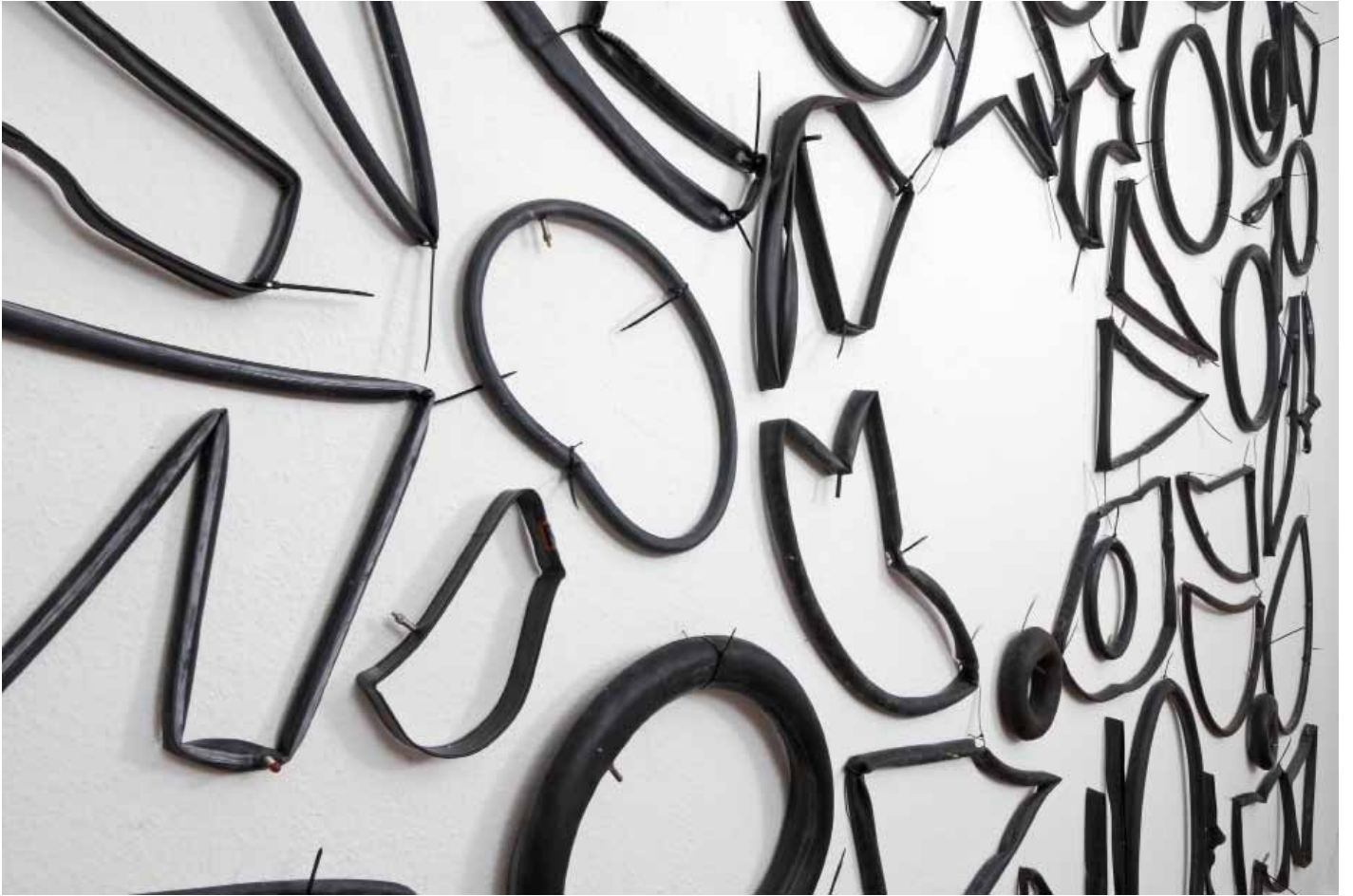




Renate Hampke
InFahrt
2010, 400 x 250 x 600 cm
Bicycle tires, zip ties



Renate Hampke
InFahrt
2010, 400 x 250 x 600 cm
Bicycle tires, zip ties



Renate Hampke
InFahrt (detail view)
2010, 400 x 250 x 600 cm
Bicycle tires, zip ties



Renate Hampke
InFahrt
2010, 400 x 250 x 600 cm
Bicycle tires, zip ties



Renate Hampke
InFahrt (detail view)
2010, 400 x 250 x 600 cm
Bicycle tires, zip ties



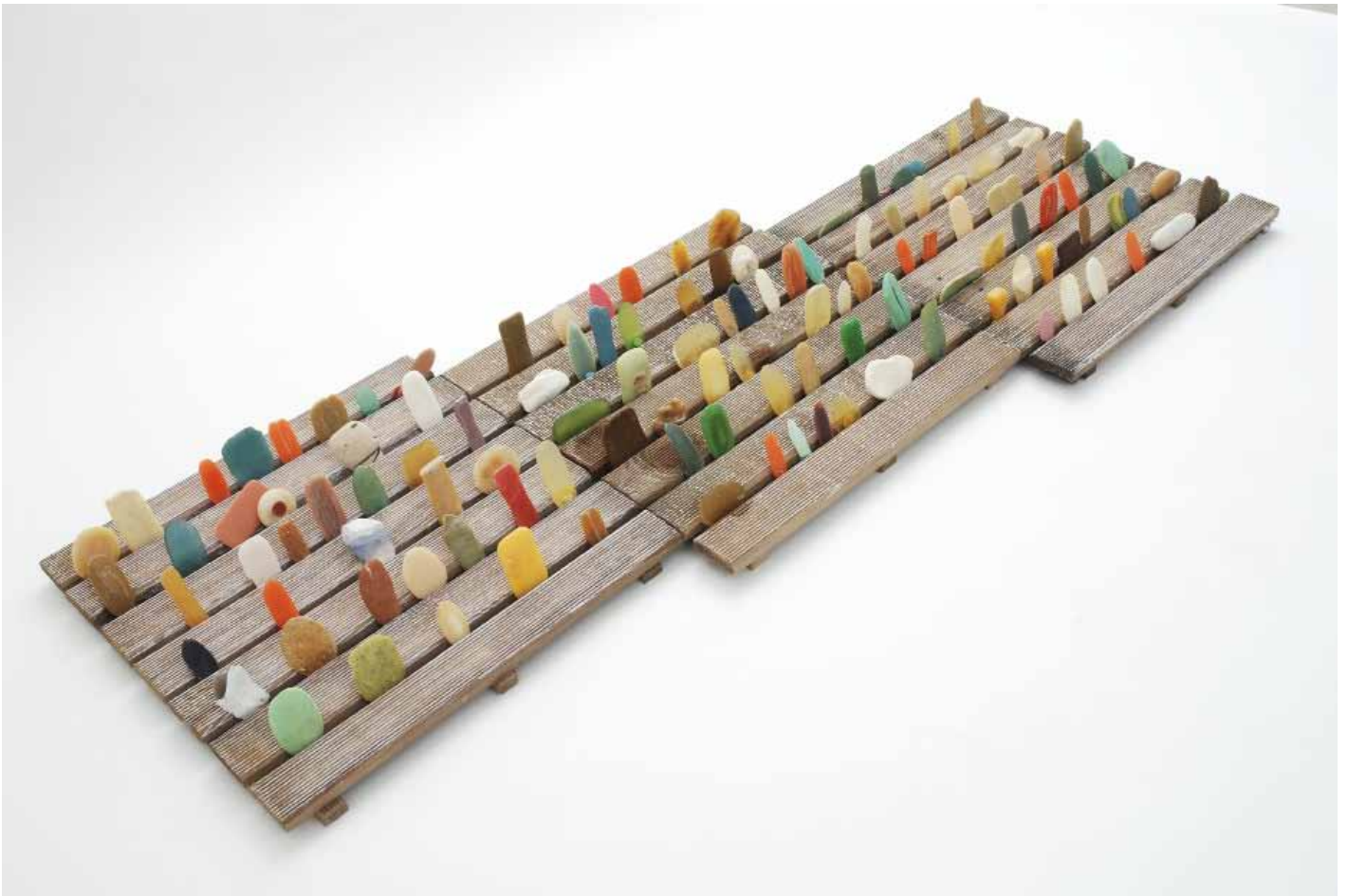
Renate Hampke
InFahrt, o.T.
2010, 100 x 80 x 28 cm
Euro Palett, bicycle tires, small apples



Renate Hampke
Standbein Phoenix
2010, 70 x 90 x 5 cm
Bicycle tires, bicycle rim protector



Renate Hampke
Standbein Phoenix
2010, 40 x 10 x 60 cm
Photofix, bicycle tire, bicycle stand



Renate Hampke

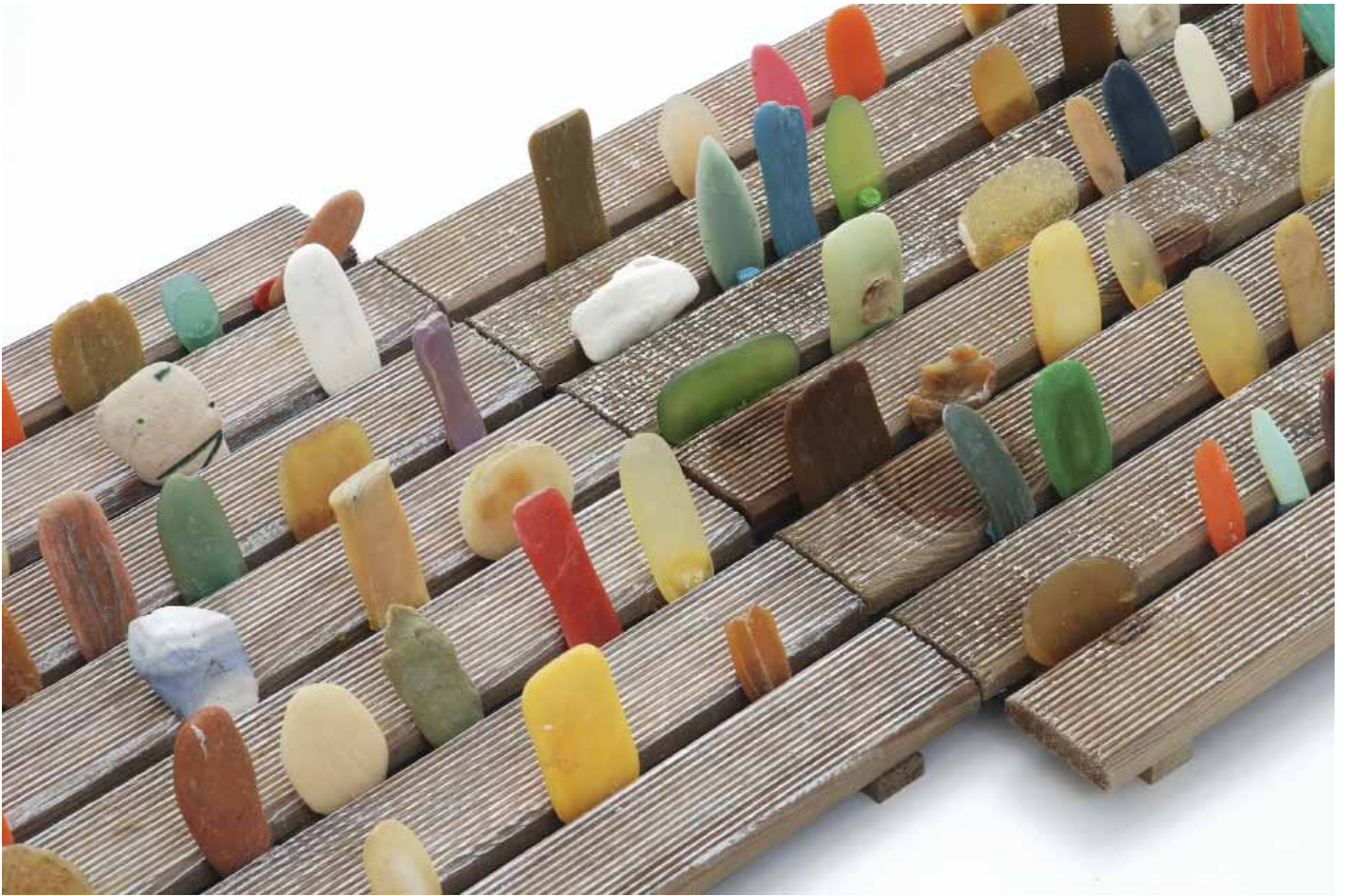
Garten z.B.

2008, 3 parts, each 55 x 50 x 18 cm

Wooden tiles, used soaps from the collection

SEMJON CONTEMPORARY
GALERIE FÜR ZEITGENÖSSISCHE KUNST





Renate Hampke
Garten z.B.
2008, 3 parts, each 55 x 50 x 18 cm
Wooden tiles, used soaps from the collection



Renate Hampke
O.T. (Ensemble)
2005, ca. 35 x 110 x 110 cm
Soap, glass, wood
Photo: H. N. Semjon



Renate Hampke
O.T. (Ensemble) (detail view)
2005, ca. 35 x 110 x 110 cm
Soap, glass, wood
Photo: H. N. Semjon



Renate Hampke
Seifen-Scheibe
2005, 80 x 80 x 18 cm
Foam ball, used soaps from the collection, plastic tie



Renate Hampke

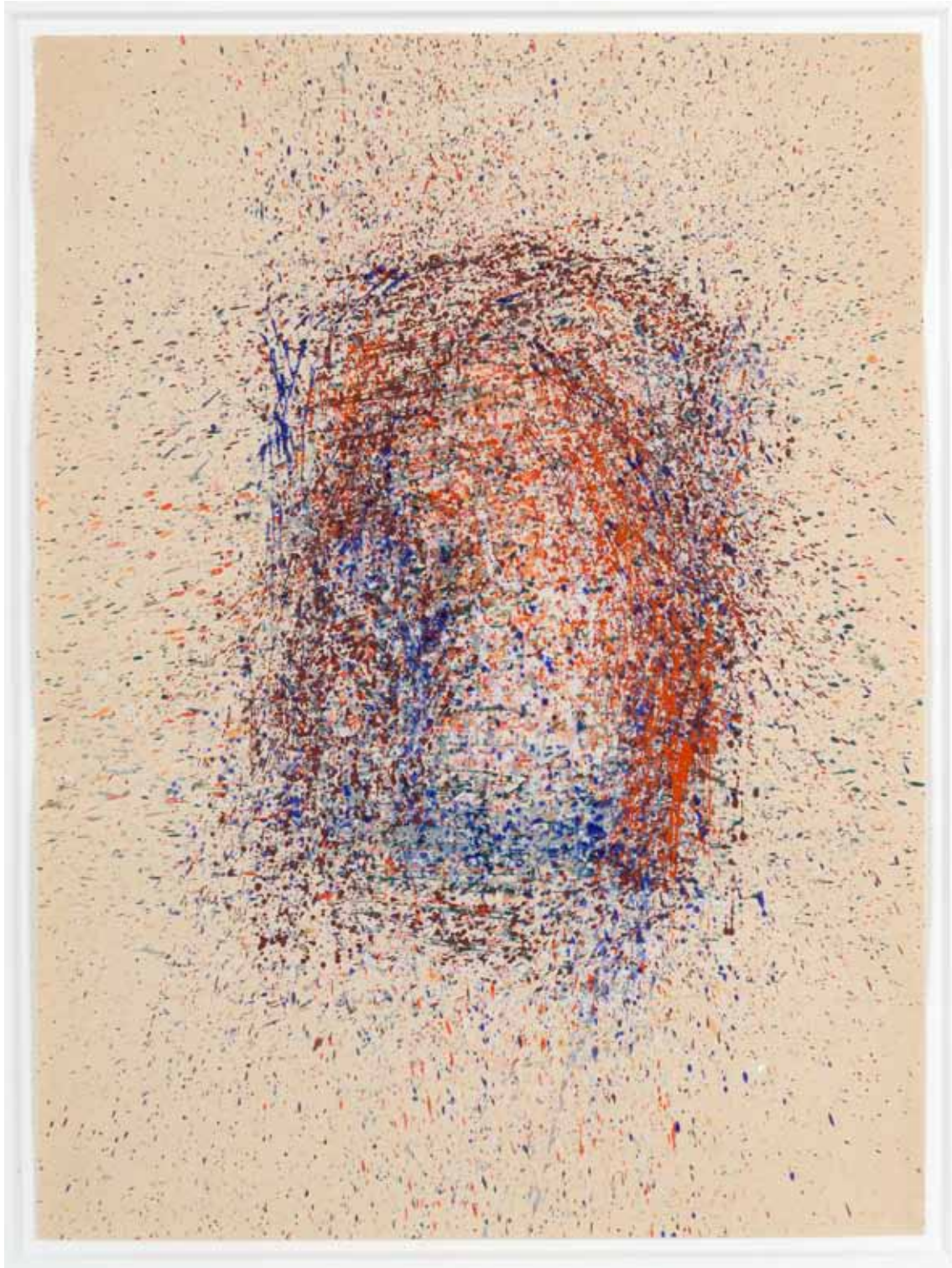
Seifen-Objekt

1995 - 2003, 90 x 110 x 35 cm

Perforated metal plate, wood, used soaps from the collection

SEMJON CONTEMPORARY
GALERIE FÜR ZEITGENÖSSISCHE KUNST

SC



Renate Hampke
O.T. / Without Title
1987, 33,9 x 25 cm (52,4 x 42 cm, framed)
Coloured ink on paper
Photo: Jürgen Baumann