

Dittmar Krüger

Gallery Portfolio

2015

SEMJON CONTEMPORARY
GALERIE FÜR ZEITGENÖSSISCHE KUNST



Schröderstr. 1, 10115 Berlin, Tel.+49-30-784 12 91, Fax.+49-30-28 09 41 99,
office@semjoncontemporary.com, www.semjoncontemporary.com



Dittmar Krüger
E lucevan le stelle I
2015, 180 x 240 cm, 5' 10 7/8" x 7' 10 1/2"
Acrylic and gold paint on canvas
Photo: Jürgen Baumann



Dittmar Krüger

E lucevan le stelle I

2015, 180 x 240 cm, 5' 10 7/8" x 7' 10 1/2"

Acrylic and gold paint on canvas

Photo: Jürgen Baumann

SEMJON CONTEMPORARY
GALERIE FÜR ZEITGENÖSSISCHE KUNST





Dittmar Krüger

O.T. 3/2010

2015, 54 x 180 x 12 cm, 21 1/4" x 70 7/8" x 4 3/4"

MDF, aluminum profiles, screws, lacquer (black), acrylic glass,
acrylic paint (yellow, orange, red); photo: Jürgen Baumann

SEMJON CONTEMPORARY
GALERIE FÜR ZEITGENÖSSISCHE KUNST





Dittmar Krüger

O.T. 3/2010

2015, 54 x 180 x 12 cm, 21 1/4" x 70 7/8" x 4 3/4"

MDF, aluminum profiles, screws, lacquer (black), acrylic glass,
acrylic paint (yellow, orange, red); photo: Jürgen Baumann

SEMJON CONTEMPORARY
GALERIE FÜR ZEITGENÖSSISCHE KUNST





Dittmar Krüger

O.T. 3/2010

2015, 54 x 180 x 12 cm, 21 1/4" x 70 7/8" x 4 3/4"

MDF, aluminum profiles, screws, lacquer (black), acrylic glass,
acrylic paint (yellow, orange, red); photo: Jürgen Baumann

SEMJON CONTEMPORARY
GALERIE FÜR ZEITGENÖSSISCHE KUNST





Dittmar Krüger

O.T. 2/2015 (kind of blue)

2015, 15 x 162 x 12 cm, 5 7/8" x 63 3/8" x 4 3/4"

MDF, aluminum profiles, screws, lacquer (black), acrylic glass,
acrylic paint (black, cobalt blue); photo: Jürgen Baumann

SEMJON CONTEMPORARY
GALERIE FÜR ZEITGENÖSSISCHE KUNST

SC



Dittmar Krüger

O.T. 2/2015 (kind of blue)

2015, 15 x 162 x 12 cm, 5 7/8" x 63 3/8" x 4 3/4"

MDF, aluminum profiles, screws, lacquer (black), acrylic glass,
acrylic paint (black, cobalt blue); photo: Jürgen Baumann

SEMJON CONTEMPORARY
GALERIE FÜR ZEITGENÖSSISCHE KUNST





Dittmar Krüger

O.T. 3/2014

2015, 36 x 39 x 12 cm, 14 3/16" x 15 3/8" x 4 3/4"

MDF, aluminum profiles, screws, lacquer (gray), acrylic glass,
acrylic paint (gray, yellow, umbra); photo: Jürgen Baumann

SEMJON CONTEMPORARY
GALERIE FÜR ZEITGENÖSSISCHE KUNST





Dittmar Krüger

O.T. 3/2014

2015, 36 x 39 x 12 cm, 14 3/16" x 15 3/8" x 4 3/4"

MDF, aluminum profiles, screws, lacquer (gray), acrylic glass,
acrylic paint (gray, yellow, umbra); photo: Jürgen Baumann

SEMJON CONTEMPORARY
GALERIE FÜR ZEITGENÖSSISCHE KUNST





Dittmar Krüger

O.T. 2/2014

2015, 15 x 27 x 12 cm, 5 7/8" x 19 5/8" x 4 3/4"

MDF, aluminum profiles, screws, lacquer (black, white), acrylic glass,
acrylic paint (yellow, ochre, umbra); photo: Jürgen Baumann

SEMJON CONTEMPORARY
GALERIE FÜR ZEITGENÖSSISCHE KUNST





Dittmar Krüger

O.T. 2/2014

2015, 15 x 27 x 12 cm, 5 7/8" x 19 5/8" x 4 3/4"

MDF, aluminum profiles, screws, lacquer (black, white), acrylic glass,
acrylic paint (yellow, ochre, umbra); photo: Jürgen Baumann

SEMJON CONTEMPORARY
GALERIE FÜR ZEITGENÖSSISCHE KUNST





Dittmar Krüger

O.T. 1/2015

2015, 27 x 27 x 12 cm, 10 5/8" x 10 5/8" x 4 3/4"

MDF, aluminum profiles, screws, lacquer (white), acrylic glass,
acrylic paint (gray, orange); photo: Jürgen Baumann

SEMJON CONTEMPORARY
GALERIE FÜR ZEITGENÖSSISCHE KUNST





Dittmar Krüger

O.T. 1/2015

2015, 27 x 27 x 12 cm, 10 5/8" x 10 5/8" x 4 3/4"

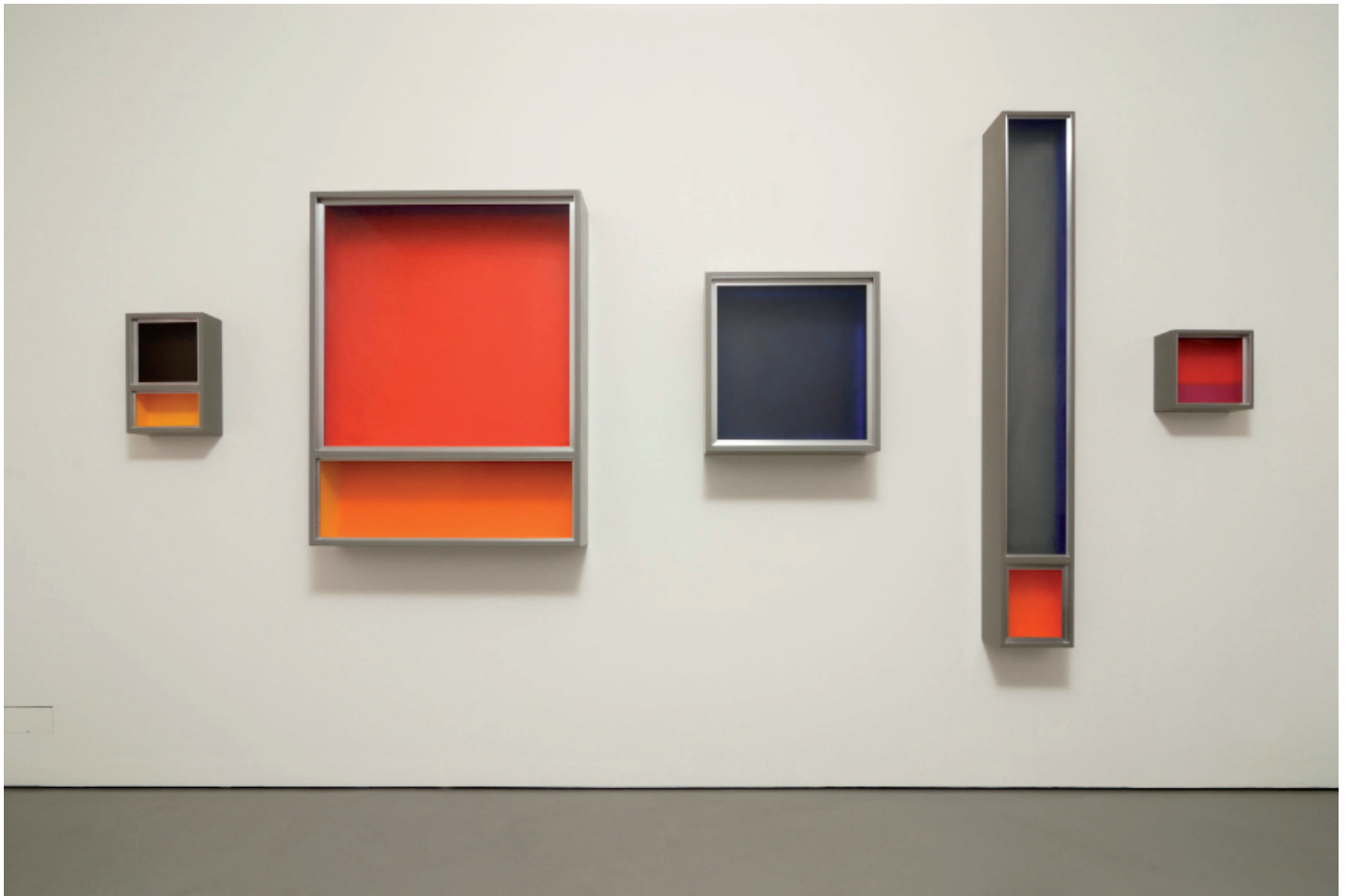
MDF, aluminum profiles, screws, lacquer (white), acrylic glass,
acrylic paint (gray, orange); photo: Jürgen Baumann

SEMJON CONTEMPORARY
GALERIE FÜR ZEITGENÖSSISCHE KUNST





Dittmar Krüger
380 > 780 nm – Wall Objects
2012, installation view at Semjon Contemporary
Photo: Jürgen Baumann



Dittmar Krüger
380 > 780 nm – Wall Objects
2012, installation view at Semjon Contemporary
Photo: Jürgen Baumann



Dittmar Krüger
380 > 780 nm – Wall Objects
2012, installation view at Semjon Contemporary
Photo: Jürgen Baumann



Dittmar Krüger
380 > 780 nm – Wall Objects
2012, installation view at Semjon Contemporary
Photo: Jürgen Baumann



Dittmar Krüger

O.T. 5/2012

2012, 27 x 135 x 21 cm, 10 5/8" x 53 1/8" x 8 1/4"

MDF, aluminum profiles, screws, lacquer (black), acrylic glass, drinking glasses, acrylic paint (titanium white (non bleached), white, cadmium yellow); photo: Jürgen Baumann

SEMJON CONTEMPORARY
GALERIE FÜR ZEITGENÖSSISCHE KUNST





Dittmar Krüger

O.T. 6/2012

2012, 27 x 161 x 21 cm, 10 5/8" x 63 3/8" x 8 1/4"

MDF, aluminum profiles, screws, lacquer (black), acrylic glass, drinking glasses, acrylic paint (grey, white, cadmium yellow)

Photo: Jürgen Baumann

SEMJON CONTEMPORARY
GALERIE FÜR ZEITGENÖSSISCHE KUNST





Dittmar Krüger

O.T. 6/2012, detail

2012, 27 x 161 x 21 cm, 10 5/8" x 63 3/8" x 8 1/4"

MDF, aluminum profiles, screws, lacquer (black), acrylic glass, drinking glasses, acrylic paint (grey, white, cadmium yellow)

Photo: Jürgen Baumann

SEMJON CONTEMPORARY
GALERIE FÜR ZEITGENÖSSISCHE KUNST





Dittmar Krüger

O.T. 7/2012

2012, 27 x 81 x 21 cm, 10 5/8" x 31 7/8" x 8 1/4"

MDF, aluminum profiles, screws, lacquer (black), acrylic glass,
drinking glasses, acrylic paint (cadmium yellow, white)

SEMJON CONTEMPORARY
GALERIE FÜR ZEITGENÖSSISCHE KUNST





Dittmar Krüger

O.T. 7/2012, detail

2012, 27 x 81 x 21 cm, 10 5/8" x 31 7/8" x 8 1/4"

MDF, aluminum profiles, screws, lacquer (black), acrylic glass, drinking glasses, acrylic paint (cadmium yellow, white); photo: Jürgen Baumann

SEMJON CONTEMPORARY
GALERIE FÜR ZEITGENÖSSISCHE KUNST





Dittmar Krüger

O.T. 1/2012

2012, 120 x 90 x 21 cm, 47 1/4" x 35 7/16" x 8 1/4"

MDF, aluminum profiles, screws, lacquer (grey), acrylic glass, acrylic paint
(cadmium red and cadmium orange); photo: Jürgen Baumann

SEMJON CONTEMPORARY
GALERIE FÜR ZEITGENÖSSISCHE KUNST





Dittmar Krüger

O.T.

2012, 180 x 24 x 18 cm, 70 7/8" x 9 7/16" x 7 1/16"

MDF, aluminum profiles, screws, lacquer (grey), acrylic glass, acrylic paint
(cobalt blue, grey, cadmium orange); photo: Jürgen Baumann

SEMJON CONTEMPORARY
GALERIE FÜR ZEITGENÖSSISCHE KUNST





Dittmar Krüger

O.T., 113/09

2003, 99 x 90 x 12 cm, 39" x 35 7/16" x 15 3/8"

MDF, aluminum profiles, screws, lacquer (grey), acrylic glass,
acrylic paint (magenta red, cadmium red and cadmium yellow)

Photo: Jürgen Baumann

SEMJON CONTEMPORARY
GALERIE FÜR ZEITGENÖSSISCHE KUNST





Dittmar Krüger

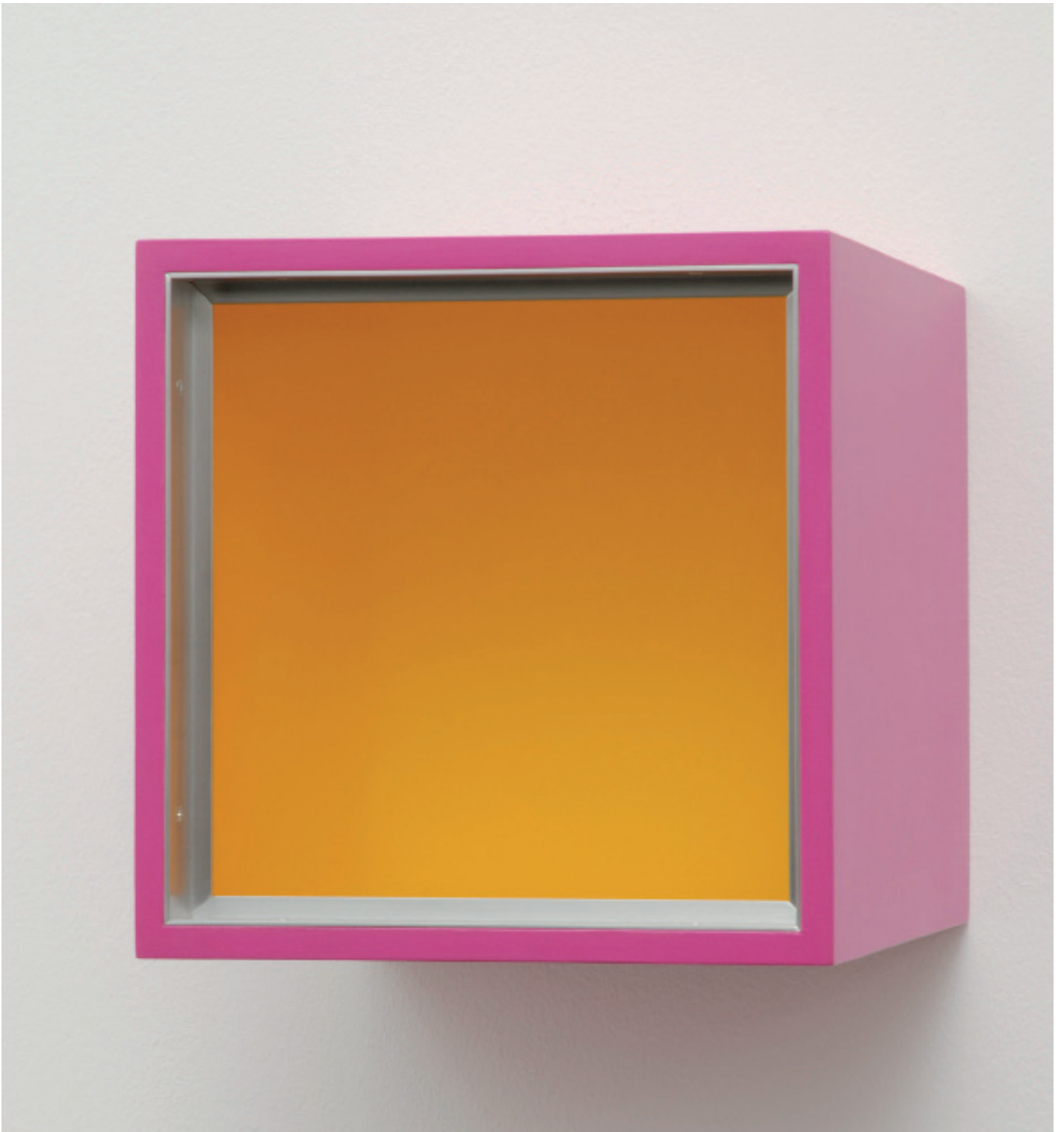
O.T. 2/2012

2003, 60 x 57 x 21 cm, 23 5/8" x 22 7/16" x 8 1/4"

MDF, aluminum profiles, screws, lacquer (grey), acrylic glass,
acrylic paint (prussian blue, ultramarin); photo: Jürgen Baumann

SEMJON CONTEMPORARY
GALERIE FÜR ZEITGENÖSSISCHE KUNST





Dittmar Krüger

O.T. 3/2012

2003, 27 x 27 x 12 cm, 10 5/8" x 10 5/8" x 4 3/4"

MDF, aluminum profiles, screws, lacquer (magenta red), acrylic glass,
acrylic paint (cadmium yellow, yellow); photo: Jürgen Baumann

SEMJON CONTEMPORARY
GALERIE FÜR ZEITGENÖSSISCHE KUNST





Dittmar Krüger

O.T. 4/2012

2012, 27 x 27 x 12 cm, 10 5/8" x 10 5/8" x 4 3/4"

MDF, aluminum profiles, screws, lacquer (grey), acrylic glass,
acrylic paint (cadmium orange, magenta red)

SEMJON CONTEMPORARY
GALERIE FÜR ZEITGENÖSSISCHE KUNST





Dittmar Krüger

Studio situation

2012, 36 x 27 x 12 or 27 x 27 x 12 cm, 14 3/16" x 10 5/8" x 4 3/4"
or 10 5/8" x 10 5/8" x 4 3/4"

MDF, aluminum profiles, screws, lacquer (grey), acrylic glass,
acrylic paint (silver, cobalt blue); photo: Dittmar Krüger

SEMJON CONTEMPORARY
GALERIE FÜR ZEITGENÖSSISCHE KUNST





Dittmar Krüger

O.T. 1/2011

2011, 99 x 54 x 12 cm, 39" x 21 1/4" x 4 3/4"

MDF, aluminum profiles, screws, lacquer (grey), acrylic glass,
acrylic paint (silver, cobalt blue); photo: Jürgen Baumann

SEMJON CONTEMPORARY
GALERIE FÜR ZEITGENÖSSISCHE KUNST





Dittmar Krüger

O.T. 6/2011

2011, 36 x 27 x 12 cm

MDF, aluminum profiles, screws, lacquer (black), acrylic glass, acrylic paint
(black, cadmium orange); photo: Jürgen Baumann

SEMJON CONTEMPORARY
GALERIE FÜR ZEITGENÖSSISCHE KUNST





Dittmar Krüger

114/09

2009, 36 x 27 x 12 cm, 14 3/16" x 10 5/8" x 4 3/4"

MDF, aluminum profiles, screws, lacquer (black), acrylic glass,
acrylic paint (magenta red, cadmium red); photo: Jürgen Baumann

SEMJON CONTEMPORARY
GALERIE FÜR ZEITGENÖSSISCHE KUNST





Dittmar Krüger

O.T. 116/09

2009, 36 x 27 x 12 cm, 14 3/16" x 10 5/8" x 4 3/4"

MDF, aluminum profiles, screws, lacquer (black), acrylic glass,
acrylic paint (black, cobalt blue); photo: Jürgen Baumann

SEMJON CONTEMPORARY
GALERIE FÜR ZEITGENÖSSISCHE KUNST





Dittmar Krüger

O.T. 5/2011

2011, 36 x 27 x 12 cm, 14 3/16" x 10 5/8" x 4 3/4"

MDF, aluminum profiles, screws, lacquer (grey), acrylic glass,
acrylic paint (silver, cobalt blue); photo: Dittmar Krüger

SEMJON CONTEMPORARY
GALERIE FÜR ZEITGENÖSSISCHE KUNST

SC



Dittmar Krüger

O.T. 3/2011

2011, 63 x 57 x 21 cm, 24 13/16" x 22 7/16" x 8 1/4"

MDF, aluminum profiles, screws, lacquer (grey), acrylic glass,
acrylic paint (silver, cobalt blue); photo: Jürgen Baumann

SEMJON CONTEMPORARY
GALERIE FÜR ZEITGENÖSSISCHE KUNST





Dittmar Krüger

E/D

2006, 27 x 12 x 12 cm, 10 5/8" x 4 3/4" x 4 3/4"

MDF, aluminum profiles, screws, lacquer (grey), acrylic glass, drinking glass, acrylic paint (grey, cadmium yellow); photo: Jürgen Baumann

SEMJON CONTEMPORARY
GALERIE FÜR ZEITGENÖSSISCHE KUNST





Dittmar Krüger

E/E

2006, 27 x 12 x 12 cm, 10 5/8" x 4 3/4" x 4 3/4"

MDF, aluminum profiles, screws, lacquer (grey), acrylic glass,
drinking glass, acrylic paint (grey, cadmium yellow, titanium white)
Photo: Jürgen Baumann

SEMJON CONTEMPORARY
GALERIE FÜR ZEITGENÖSSISCHE KUNST

SC



Dittmar Krüger

E/C

2007, 27 x 12 x 12 cm, 10 5/8" x 4 3/4" x 4 3/4"

MDF, aluminum profiles, screws, lacquer (grey), acrylic glass,
drinking glass, acrylic paint (titanium white, cadmium yellow)

Photo: Jürgen Baumann

SEMJON CONTEMPORARY
GALERIE FÜR ZEITGENÖSSISCHE KUNST





Dittmar Krüger

A 12 – No. 1/5

2007, 27 x 27 x 12 cm, 10 5/8" x 10 5/8" x 4 3/4"

MDF, aluminum profiles, screws, lacquer (grey), acrylic glass,
acrylic paint (yellow, green); photo: Jürgen Baumann

SEMJON CONTEMPORARY
GALERIE FÜR ZEITGENÖSSISCHE KUNST





Dittmar Krüger

O. T. 121/09

2009, each 180 x 54 x 12 cm, 70 7/8" x 21 1/4" x 4 3/4"

MDF, aluminum profiles, screws, lacquer (grey), acrylic glass,
acrylic paint (titanium white, cadmium yellow); photo: Dittmar Krüger

SEMJON CONTEMPORARY
GALERIE FÜR ZEITGENÖSSISCHE KUNST





Dittmar Krüger

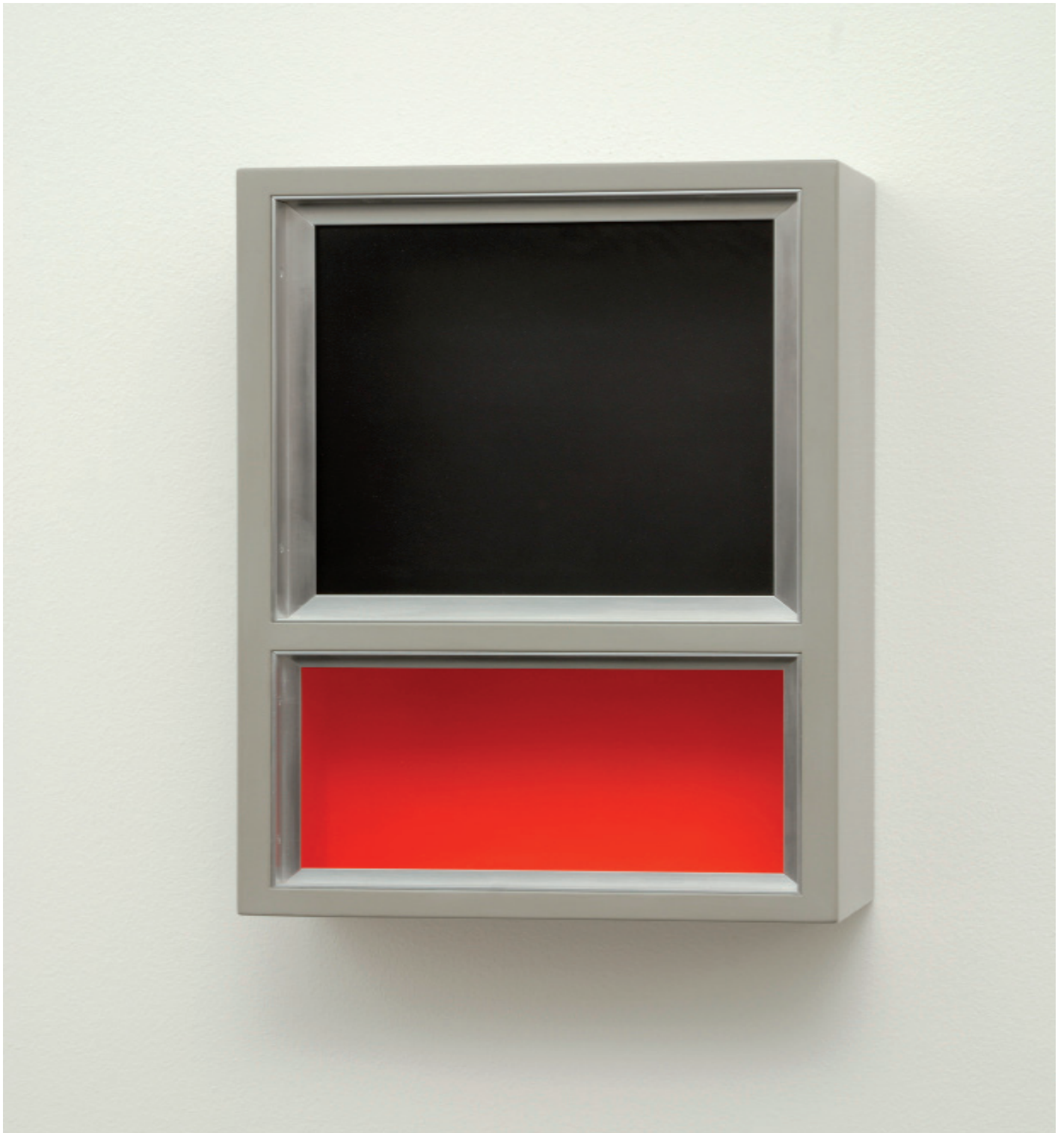
O.T. (84/03)

2003, 42 x 27 x 12 cm, 16 1/2" x 10 5/8" x 4 3/4"

MDF, aluminum profiles, screws, lacquer (grey), acrylic glass,
acrylic paint (cadmium yellow, umbra); photo: Jürgen Baumann

SEMJON CONTEMPORARY
GALERIE FÜR ZEITGENÖSSISCHE KUNST





Dittmar Krüger

O.T. (85/03)

2003, 42 x 27 x 12 cm, 16 1/2" x 10 5/8" x 4 3/4"

MDF, aluminum profiles, screws, lacquer (grey), acrylic glass,
acrylic paint (cadmium orange, umbra); photo: Jürgen Baumann

SEMJON CONTEMPORARY
GALERIE FÜR ZEITGENÖSSISCHE KUNST





Dittmar Krüger

At Berlin Preview Art Fair 2011 with Semjon Contemporary
Large three partite work: *O. T. 121/09*, 2009, each 180 x 54 x 12 cm
Photo: H. N. Semjon

SEMJON CONTEMPORARY
GALERIE FÜR ZEITGENÖSSISCHE KUNST





Dittmar Krüger

O.T. 10/2012

2012, 36 x 27 x 12 cm, 14 3/16" x 10 5/8" x 4 3/4"

MDF, aluminum profiles, screws, lacquer (black), acrylic glass,
acrylic paint (Magenta, cadmium yellow); photo: Jürgen Baumann

SEMJON CONTEMPORARY
GALERIE FÜR ZEITGENÖSSISCHE KUNST





Dittmar Krüger

O.T. 11/2012

2011, 27 x 27 x 12 cm, 10 5/8" x 10 5/8" x 4 3/4"

MDF, aluminum profiles, screws, lacquer (black), acrylic glass,
acrylic paint (cadmium yellow); photo: Jürgen Baumann

SEMJON CONTEMPORARY
GALERIE FÜR ZEITGENÖSSISCHE KUNST





Dittmar Krüger
Ohne Titel 2012
2012, 36 x 27 x 12 cm, 14 3/16" x 10 5/8" x 4 3/4"
MDF, aluminum profiles, screws, lacquer (black), acrylic glass,
acrylic paint (black, cadmium orange); photo: Jürgen Baumann

SEMJON CONTEMPORARY
GALERIE FÜR ZEITGENÖSSISCHE KUNST





Dittmar Krüger

O.T. 1/2013

2013, 36 x 27 x 12 cm, 14 3/16" x 10 5/8" x 4 3/4"

MDF, aluminum profiles, screws, lacquer (black), acrylic glass, acrylic paint
(cadmium yellow, cadmium orange); photo: Jürgen Baumann

SEMJON CONTEMPORARY
GALERIE FÜR ZEITGENÖSSISCHE KUNST





Dittmar Krüger

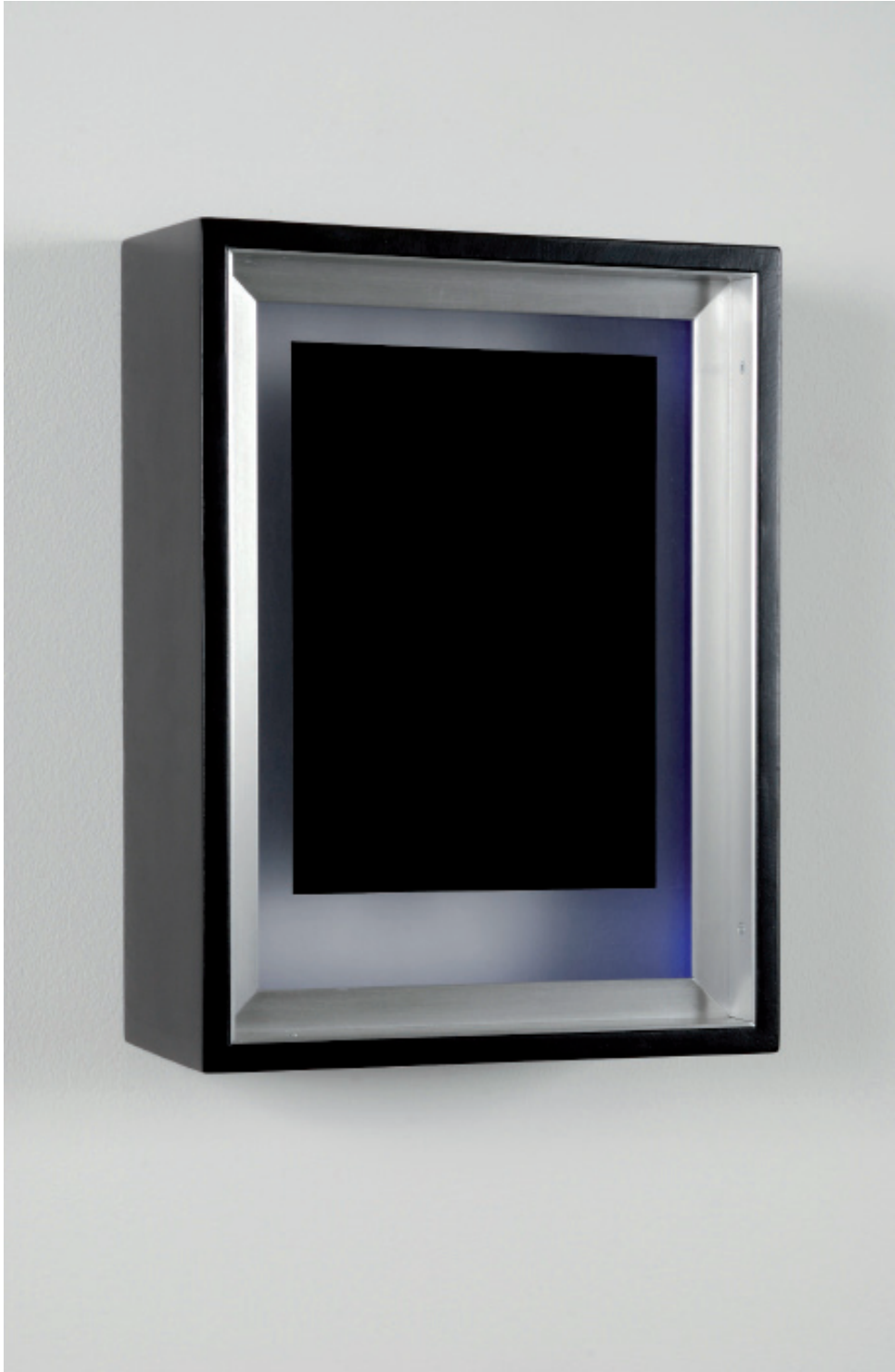
O.T. 2/2013

2013, 36 x 27 x 12 cm, 14 3/16" x 10 5/8" x 4 3/4"

MDF, aluminum profiles, screws, lacquer (black), acrylic glass,
acrylic paint (black, cadmium orange); photo: Jürgen Baumann

SEMJON CONTEMPORARY
GALERIE FÜR ZEITGENÖSSISCHE KUNST





Dittmar Krüger

O.T. 12/2012

2012, 36 x 27 x 12 cm, 14 3/16" x 10 5/8" x 4 3/4"

MDF, aluminum profiles, screws, lacquer (black), acrylic glass,
acrylic paint (black, cadmium orange); photo: Jürgen Baumann

SEMJON CONTEMPORARY
GALERIE FÜR ZEITGENÖSSISCHE KUNST





Dittmar Krüger

O.T. 9/2012

2012, 36 x 27 x 12 cm, 14 3/16" x 10 5/8" x 4 3/4"

MDF, aluminum profiles, screws, lacquer (black), acrylic glass,
acrylic paint (black, cadmium orange); photo: Jürgen Baumann

SEMJON CONTEMPORARY
GALERIE FÜR ZEITGENÖSSISCHE KUNST

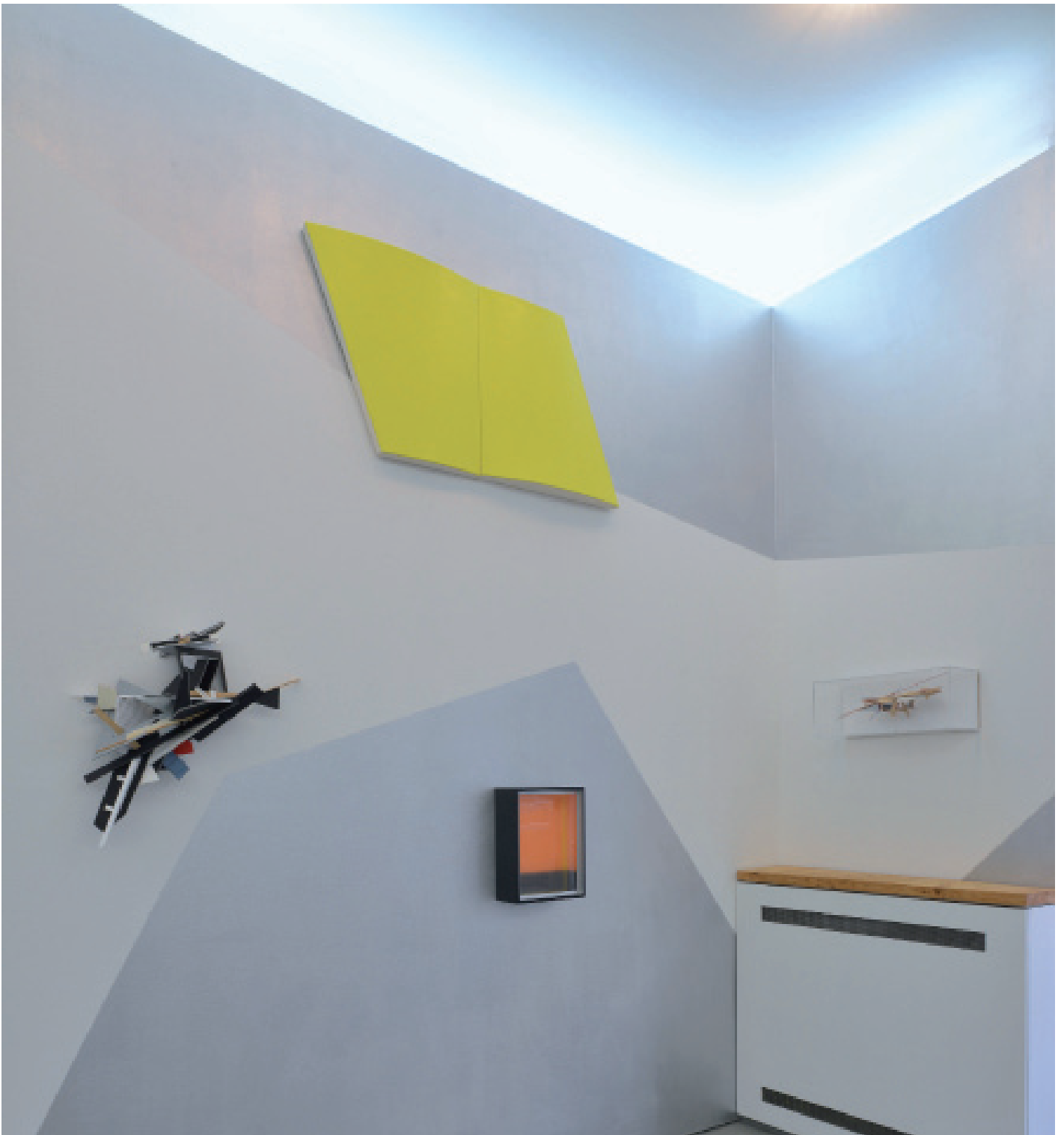




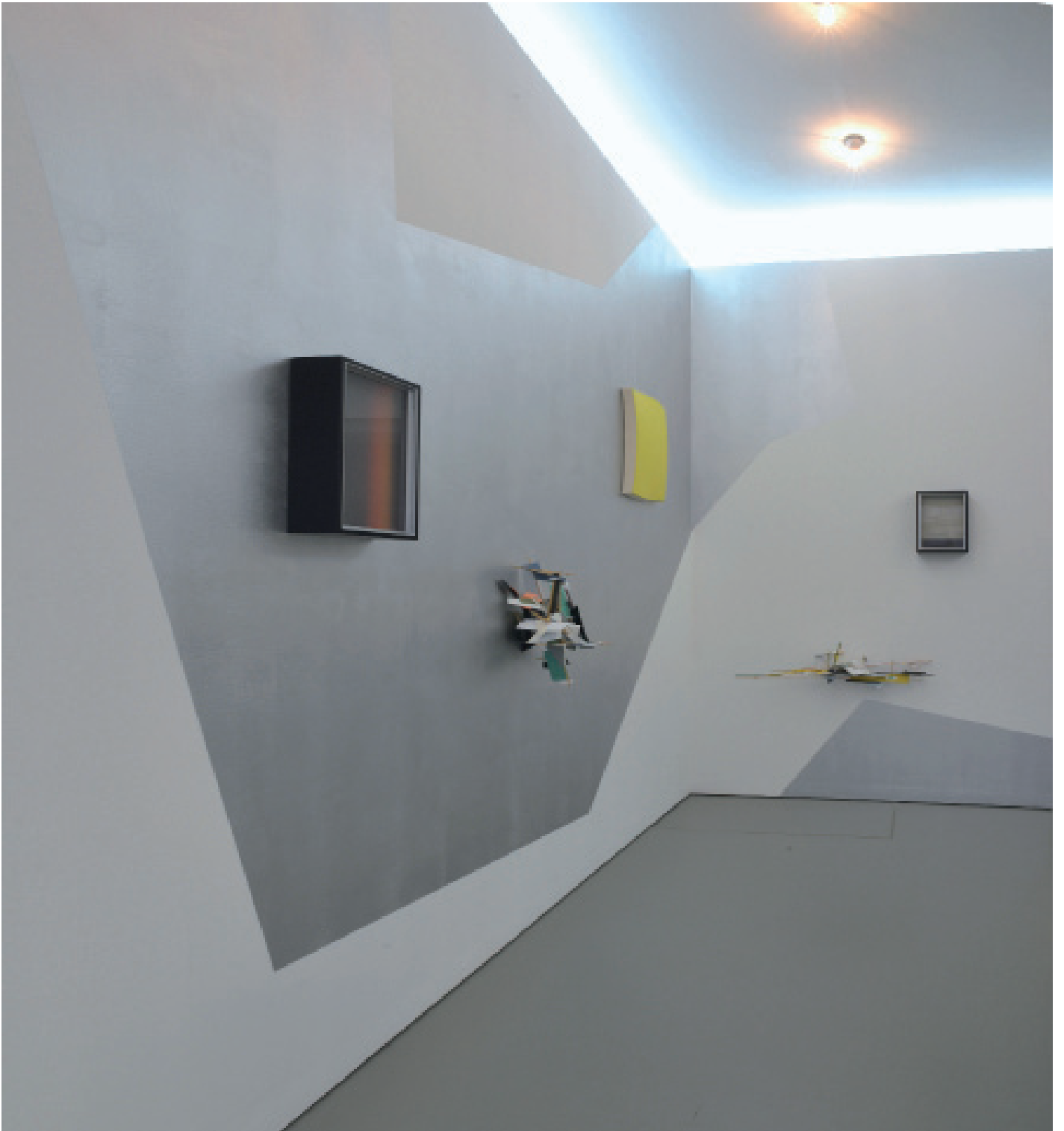
Dirk Rathke with Colin Ardley and Dittmar Krüger at their collaborative exhibition *Trialog* 2013/14, installation view at Semjon Contemporary
Photo: Michael Kutschbach



Dirk Rathke with Colin Ardley and Dittmar Krüger at their collaborative exhibition *Trialog* 2013/14, installation view at Semjon Contemporary
Photo: Michael Kutschbach



Dirk Rathke with Colin Ardley and Dittmar Krüger at their collaborative exhibition *Trialog* 2013/14, installation view at Semjon Contemporary
Photo: Michael Kutschbach



Dirk Rathke with Colin Ardley and Dittmar Krüger at their collaborative exhibition *Trialog* 2013/14, installation view at Semjon Contemporary
Photo: Michael Kutschbach